

Determinants of Health

Introduction



Notes:

no audio

Learning Outcomes

Learning Outcomes

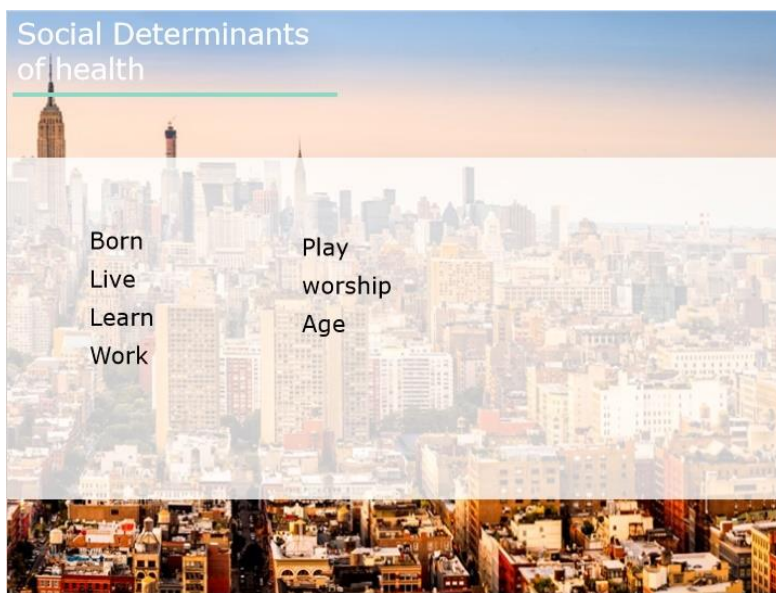


Identify healthcare disparities that impact the delivery of health promotion and clinical prevention for individuals, families, and populations.

Notes:

In this presentation, we will identify healthcare disparities that impact the delivery of health promotion and clinical prevention for individuals, families, and populations.

Social Determinants of health



Notes:

So what are social determinants of health? They are the conditions of the environments in which people are born, live, learn, work, play, worship and age that affect a wide range of health, functioning, and quality of life outcomes and risks.

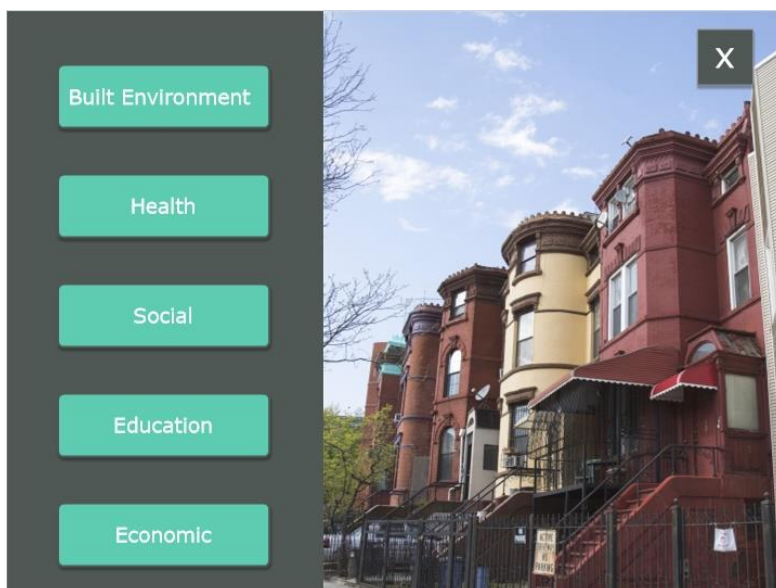
Key Area



Notes:

According to HealthyPeople.gov, there five key areas for social determinants of health which include neighborhood and built environment, health and health care, social and community context, education, and economic stability. Please click on the buttons for more information on each of these key areas

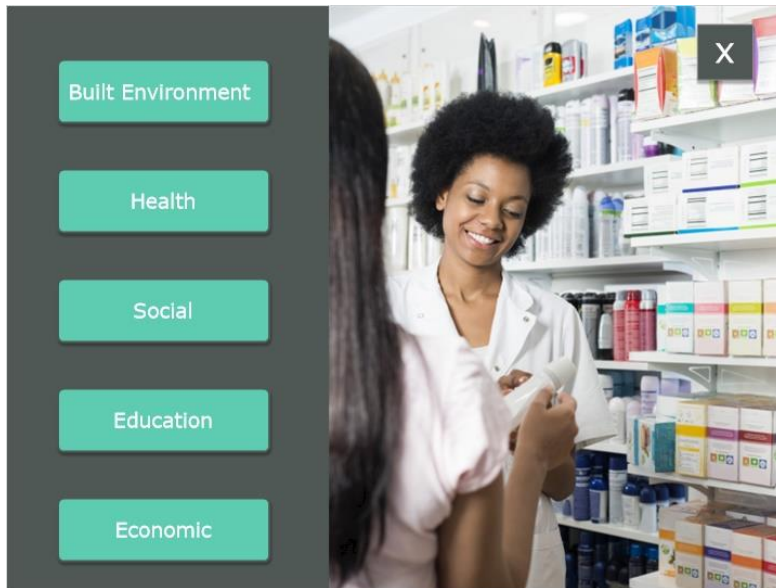
Built Environment



Built Environment

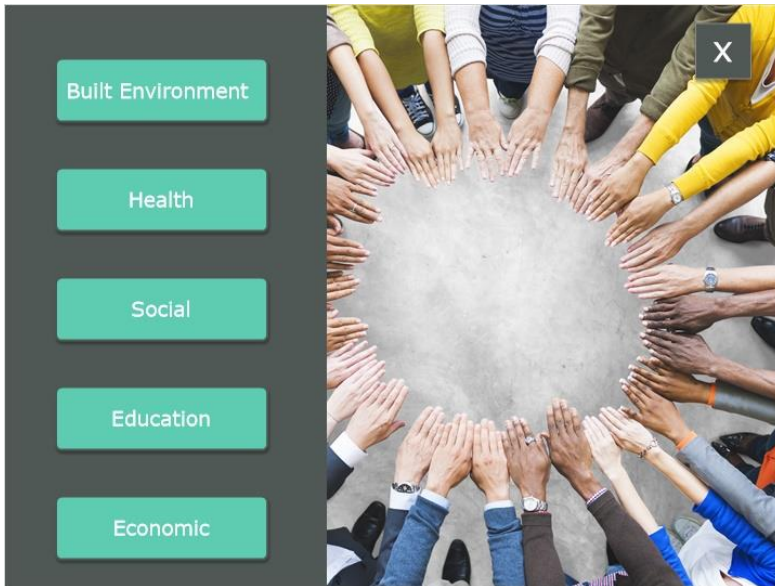
Neighborhood and built environments includes access to foods that support healthy eating patterns, quality of housing, crime and violence, and environmental conditions.

Health



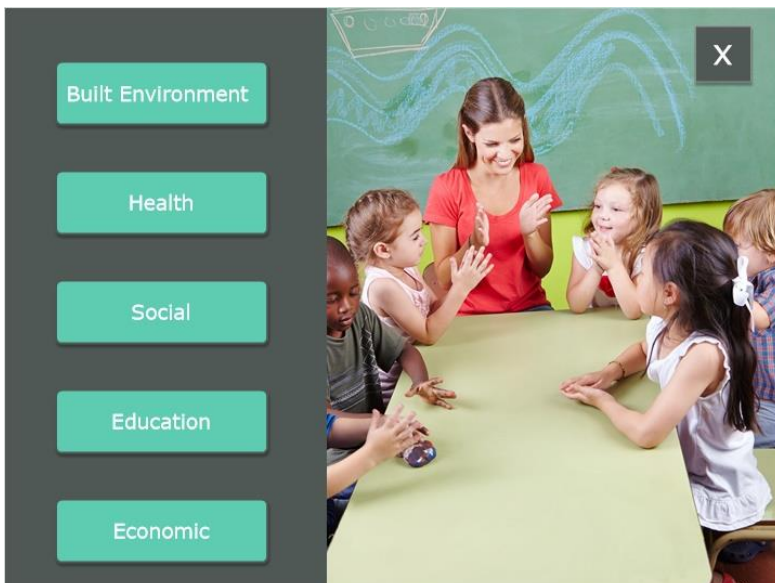
Health and healthcare includes access to health care, access to primary care and health literacy.

Social



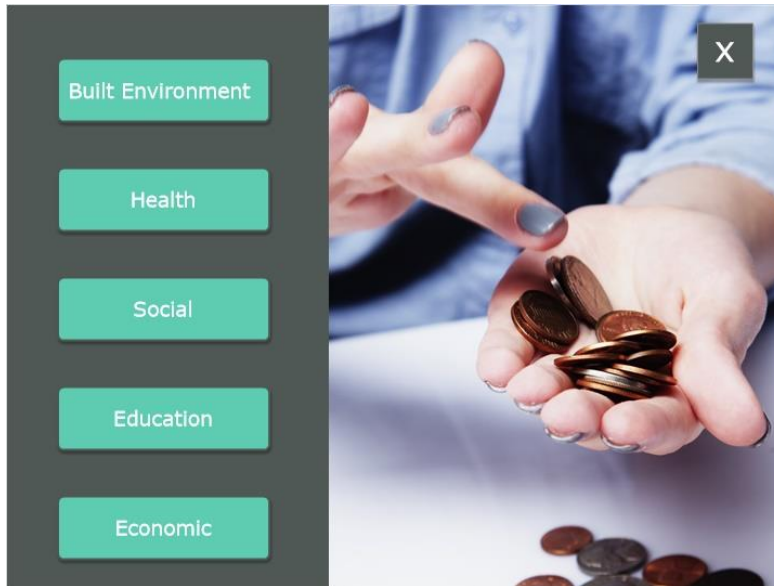
Social and community context includes social cohesion, civic participation, discrimination, and incarceration.

Education



Education includes high school graduation, enrollment in higher education, language and literacy, and early childhood education and development.

Economic



Economic stability includes poverty, employment, food insecurity, and housing instability

Nutrition




Notes:

Did you know in 2008 that 1.3% of all households had children with very low food security? The target is 0.2%. On a public health platform, the goal is to increase the proportion of schools that do not sell or offer calorically sweetened beverages to students and increase the proportion of school districts that require schools to make fruit or vegetables available whenever other food is offered or sold.

1.6 Summary

SUMMARY

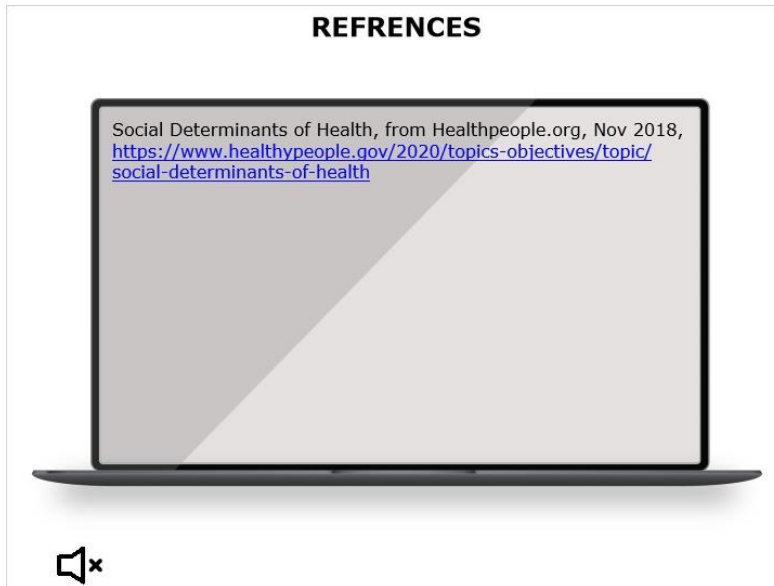
1 Identify healthcare disparities that impact the delivery of health promotion and clinical prevention for individuals, families, and populations.



Notes:

It is important to know how and why healthcare disparities impact the delivery of health promotion and clinical prevention for individuals, families, and populations. These are five key area when you are evaluating your patients that can help you with providing the most effective health care for your patients

1.7 References



Notes:

No audio

1.8 End of Presentation

